



FLAG	LIBERIA	PORT OF REGISTRY	MONROVIA
		TELEX-INMASART "C"	420907310
MASTER/CREW	POLISH	IMO No	9432139
		OPERATED SINCE	26 Nov. 2010
CALL SIGN	5LPL8		
BUILT	DALIAN SHIPYARD		
TONNAGE		GROSS	NET
	International	24115	10824
	Suez Canal	24329	23187
	Panama Canal	20126	21191
CLASS	PRS: *KM E LAL ACC(1108) IWS CG AUT NAV 1		
TYPE	Multipurpose cargo vessel. Strengthened for carriage of heavy cargoes and adapted for carriage of containers.		

MAIN ENGINE

Type	kW ~ BHP	at rpm	Fuel
SULZER 7RT - FLEX60C	16520 - 22153	114	IFO 380

AUXILIARY ENGINES Diesel Generator sets

Type	kW	rpm	AC			Fuel
			kVA	V	Hz	
3 x WARTSILA AUXPAC 975W6L201025	900					IFO 380
GENERATOR FENXI-SIEMENS LICENCE						
TYPE 1FC 6 - 3 phase			1219	450	60	
1 x EMERGENCY: NTA 855-G1	287	1800	212	450	60	

BOILERS

Type	kg/h	bar	Fuel
Oil-fired BOILER SAACKE KLN/VM -1,5/7	1500	7	IFO 380
EXHAUST-GAS BOILER SAACKE KIP/DH 1,6/7	1600	7	

SPEED FUEL CON-
SUMPTION

knots	t/day
13,4	23,4
13,8	25,2
14,5	29,1
15,1	33,3
15,8	38,0
16,5	43,0
16,8	45,7
17,1	48,5
17,8	54,5
18,5	60,9

Aux.Eng	2,8
<u>PORT</u>	4,3
Aux.Eng Boiler	

VENTILATION of cargo compartments

Natural supply, mechanical exhaust: 6 air changes per hour.

FRESH WATER EVAPORATOR

24 m³ / 24 h

TANK CAPACITY

	Capacity		SG	t
	m ³	%	T/m ³	
Fuel Oil				
+ dual purpose tanks	3830,06	98	0,960	3603,32
Diesel Oil	156,85	98	0,860	127,99
Lubricating Oil	162,57	98	0,900	140,46
Fresh Water	276,65	100	1,000	276,65
Ballast Water				
+ dual purpose tanks	11183,17	100	1,025	11462,75
Miscellaneous Tanks	170,55	98	1,025	174,81





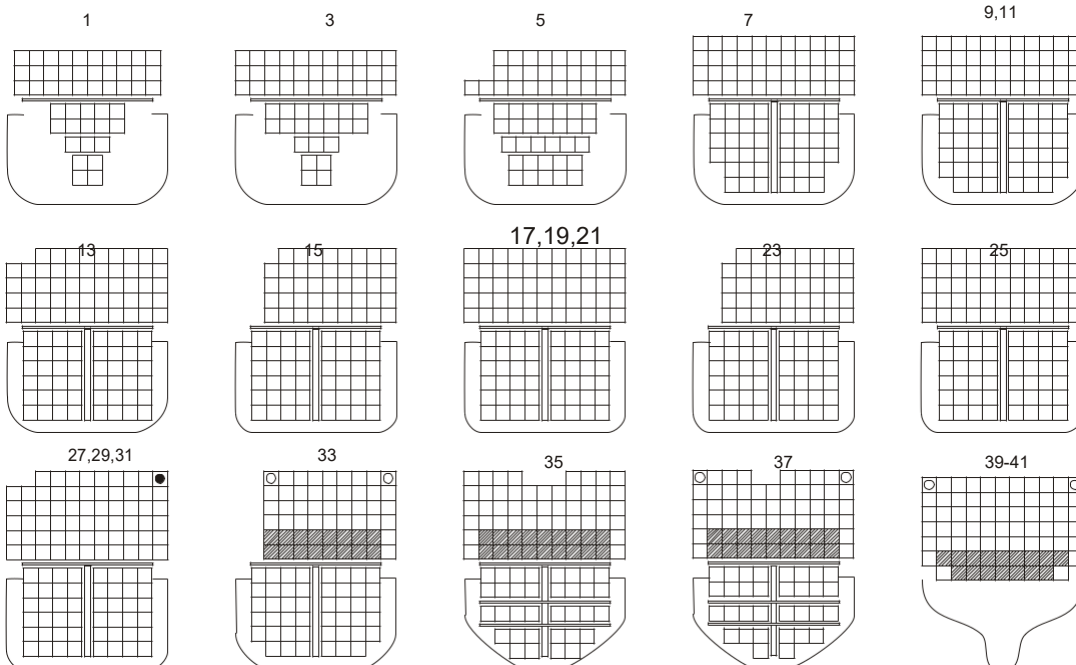
CONTAINER CAPACITY

5		4			3				2			1			HATCH No	
41 39 40	37 35 36	33 31 32	29 -	27 25 26	23 21 22	19 -	17 15 16	13 11 12	09 07 08	05 03 04	01 -	TEU FEU+(TEU)		BAY No		

11 11 11 11 11 11 11 11 11 11 9 9	9 8 11 11 11 11 11 11 11 11 11 11	9 9 9 11 9 11 9 11 9 11 9 11	9 9 11 11 11 11 11 11 11 11 11 11	8 11 9 11 9 11 9 11 9 11 9 11	8 11 9 11 9 11 9 11 9 11 9 11	9 11 11 11 11 11 11 11 11 11 11	9 11 10 11 11 11 11 11 11 11 11	7 7 5 7 7 5 6 3 3 5 2 2 5 2 2
--	--	---	--	--	--	--	--	---

GRAND TOTAL
TEU FEU+(TEU)

DECK	1108 452+(179)	75 75 75	64 63 63	54 64 64 64 55 54+(10)(64) 55	44 55 55 55 44 44+(10)(55) 44+(10)	53 44 44 44 44 44	29 33 30 29 (30)	TEU FEU+(TEU)	DECK
HOLDS	796 329+(138)	32 34 32+(2)	46 48 48 48 48 46+(2)(48) 48	48 48 48 48 48 48 (48) 48	48 46 46 44 46+(2) 44+(2)	30 21 17 (30) 17+(4)	TEU FEU+(TEU)	HOLDS	
DECK & HOLDS	1904 781+(317)	75 75 75	96 97 95+(2)	100 112 112 112 103 100+(12) (112) 103	92 103 103 103 92 92+(10)(103) 92+(10)	101 90 90 88 90+(2) 88+(2)	59 54 47 46+(30)(34)	TEU FEU+(TEU)	TOTAL IN BAY



- ☐ - 40' only
- - bay 27, 31: 40' only

▨ Refrigerated TEU 20

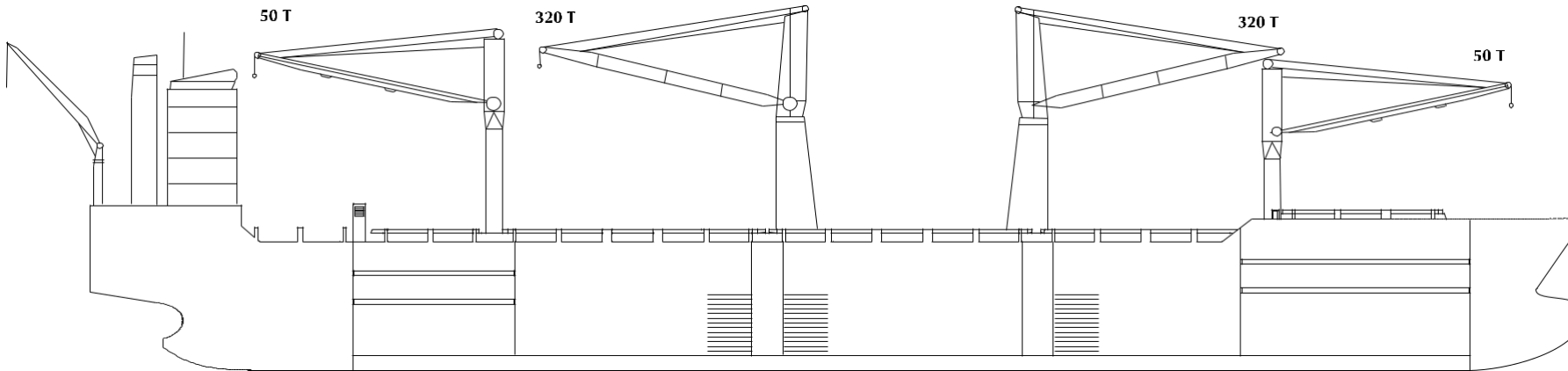
MAX. PERMISSIBLE LOADING

Uniform Distrib. T /m²
Hatch covers | Deck

T /per Stack of
TEU | FEU

Fork lift
T / Axle

Upper Deck	2,5	90	110	-
Weather deck hatch covers	2,5	70/50*	85/65*	-
Tweendeck hatch covers	4	35	45	8
Double Bottom Tank Top	18	144	180	8



PRINCIPAL DIMENSIONS

	m		m		m
LENGTH overall	199,8	DEPTH moulded	15,5	HEIGHT maximal	
- btw perpendic.	189,0				
BREADTH moulded	27,8				

HATCH No	1	2	3	4	5
----------	---	---	---	---	---

DIMENSIONS (m)	L	B	H	L	B	H	L	B	H	L	B	H	L	B	H
Upper Tweendeck A*	26,8	12,9-19,1	5,8 **	25,2	10,5	3,5-6,1	31,6	10,5	3,5-6,1	31,6	10,5	3,5-6,1	19,7	11,45	5,8**
Lower Tweendeck B*	27,5	8,9-16,1	3,1	25,2	10,5	2,0-4,6	31,6	10,5	2,0-4,6	31,6	10,5	2,0-4,6	19,7	11,45	3,5
Lower Hold	31,3	5,1-13,4	5,4	25,2	10,5	3,9-6,5	31,6	10,5	3,9-6,5	31,6	10,5	3,9-6,5	19,7	4,2-7,8	5,2

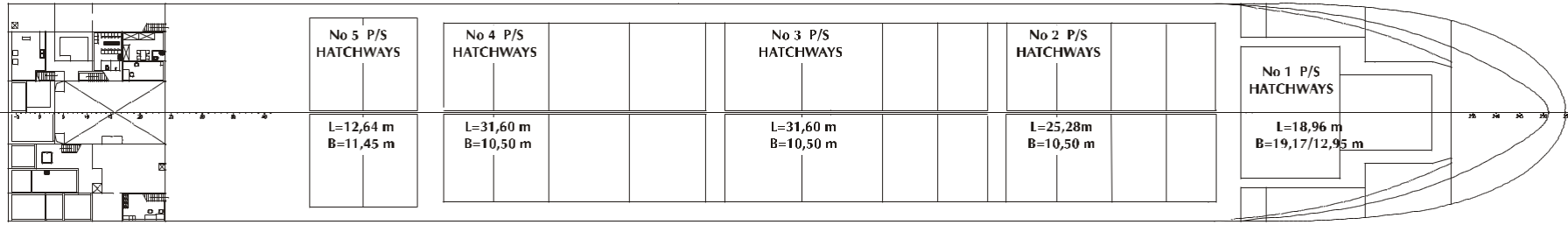
*) Breadths in holds 2 - 5 divided by longitudinal bulkhead into two (P&S) compartments.

**) Max heights in Upper Tweendecks within Hatchcoamings.

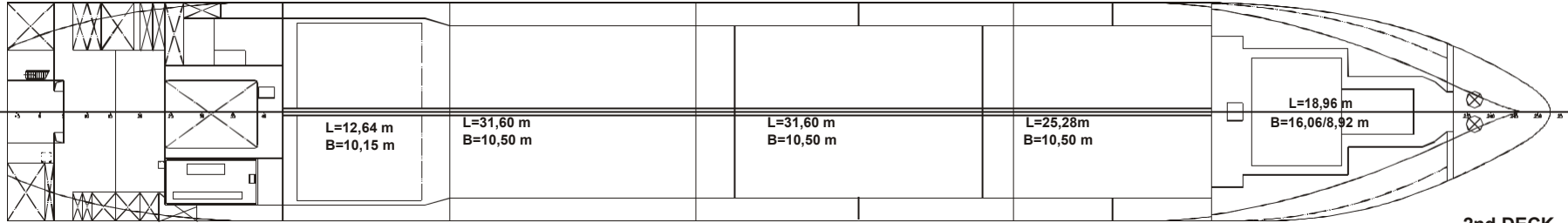
BALE CAPACITY	m ³	cu.ft	m ³	cu.ft	m ³	cu.ft	m ³	cu.ft	m ³	cu.ft	m ³	cu.ft
Upper Tweendeck A	2 638	93 160	2x1632	115 266	2x2 040	144 084	2x2 040	144 084	1 174(P)+1 181(S)	83 166	16 417	579 760
Lower Tweendeck B	1 147	40 506	2x1229	86 804	2x1 536	108 486	2x1 536	108 486	832(P)+838(S)	58 976	11 419	403 258
Lower Hold	1 595	56 327	2x888	62 718	2x1 298	91 676	2x1 253	88 498	803(P)+805(S)	56 786	10 081	356 005
Total	5 380	189 993	7 498	264 788	9 748	344 246	9 658	341 068	5 633	198 928	37 917	1 339 023



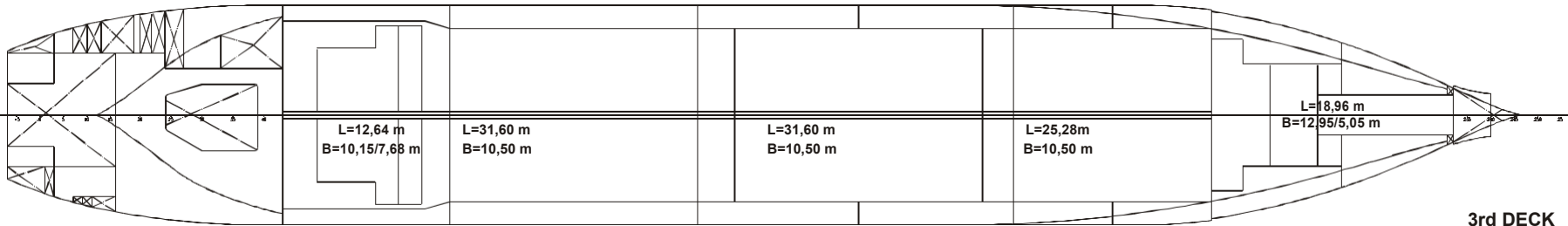
PARADOWSKI



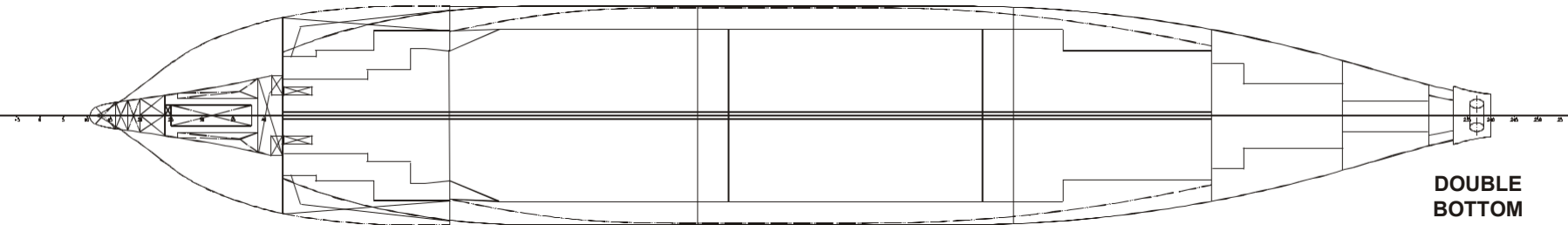
UPPER DECK



2nd DECK



3rd DECK



DOUBLE
BOTTOM
TANKS & HOLDS





CONTENTS

INFORMATION	PAGE
NAME OF VESSEL	1
FLAG	1
MASTER / CREW	1
PORT OF REGISTRY	1
CALL SIGN / INMARSAT C	1
BUILDERS (SHIPYARD) / SINCE OPERATED BY	1
CHIPOLBROK TONNAGE: INTERNATIONAL / SUEZ CANAL /	1
PANAMA CANAL CLASSIFICATION SOCIETY / CLASS IMO	1
No / TYPE OF VESSEL	1
MAIN ENGINE	2
SPEED / FUEL CONSUMPTION	2
AUXILIARY ENGINES / BOILERS	2
VENTILATION	2
FRESH WATER EVAPORATOR	2
TANK CAPACITIES	2
LOADING SCALE	3
- Deadweight / Draft / Immersion	3
- Loading Marks / Constant stores / Light Ship Weight	3
CONTAINER BAY PLAN - GENERAL / MAX. LOADING	4
CAPACITY DECKS / HATCH COVERS	4
MAIN DETAILS: LOA / BOA / DEPTH / HEIGHT / CRANES	5
CAPACITY CARGO COMPARTMENTS:	5
- DIMENSIONS	5
- BALE CAPACITY	5
DECK HORIZONTAL SECTIONS	6
CONTENTS	7

NOTES



Gdynia, November 2012.

Edition: 200 copies

Published by: CHIPOLBROK Chinese - Polish Joint Stock Shipping Co. Branch Office, Gdynia

Printed by: KRET

Utmost care and dilligence were used at compilation and verification of data contained herein which are believed to be accurate and correct, but neither Editors, nor Publishers, nor Printers assume any responsibility for eventual consequences of errors or misprints, if any.