



<u>FLAG</u>	LIBERIA	<u>PORT OF REGISTRY</u>	MONROVIA
		<u>TELEX-INMASART "C"</u>	421063811
<u>MASTER/CREW</u>	POLISH	<u>IMO No</u>	9731389
		<u>OPERATED SINCE</u>	21 Dec. 2016
<u>CALL SIGN</u>	5LPK7		
<u>BUILT</u>	Shanghai Shipyard		

<u>TONNAGE</u>		<u>GROSS</u>	<u>NET</u>
	International	24 778	10 318
	Suez Canal	27 761	23 612
	Panama Canal		22 055

CLASS **PRS: KM L3 SD HC CG ACC(1919) IWS AUT NAV1 ECO BWM**

TYPE Multipurpose cargo vessel. Strengthened for carriage of heavy cargoes and adapted for carriage of containers.



<u>MAIN ENGINE</u>							<u>SPEED</u>	<u>FUEL CON-SUMPTION</u>
Type	kW ~ BHP		at rpm		Fuel	knots	t/day	
WARTSILA 6RT-FLEX50-D	8350 - 11356		99		IFO 380	16	33	
						14	23	
						12	16	
<u>AUXILIARY ENGINES Diesel Generator sets</u>								
Type	kW	rpm	kVA	AC V	Hz	Fuel		
3 x MAIN DIESEL GENERATOR								
ENGINES: CMP-MAN 6L23/30H	960	900				IFO 380/MGO		
MAIN GENERATOR	910	900					Aux.Eng 3,0	
1 x EMERGENCY DIESEL GENERATOR ENGINE: CCFJ170-E								
1 x AUXILIARY GENERATOR	170			AC450V	60		PORT Aux.Eng Boiler 4,5	
<u>BOILERS</u>								
Type	kg/h	bar	Fuel					
OS TCI & XS-2V AALBORG			IFO 380/MGO					
EXHAUST ECONOMIZER	1430							
FUEL OIL ECONOMIZER	1500							

VENTILATION of cargo compartments

Natural supply, mechanical exhaust: 6 air changes per hour.

FRESH WATER EVAPORATOR

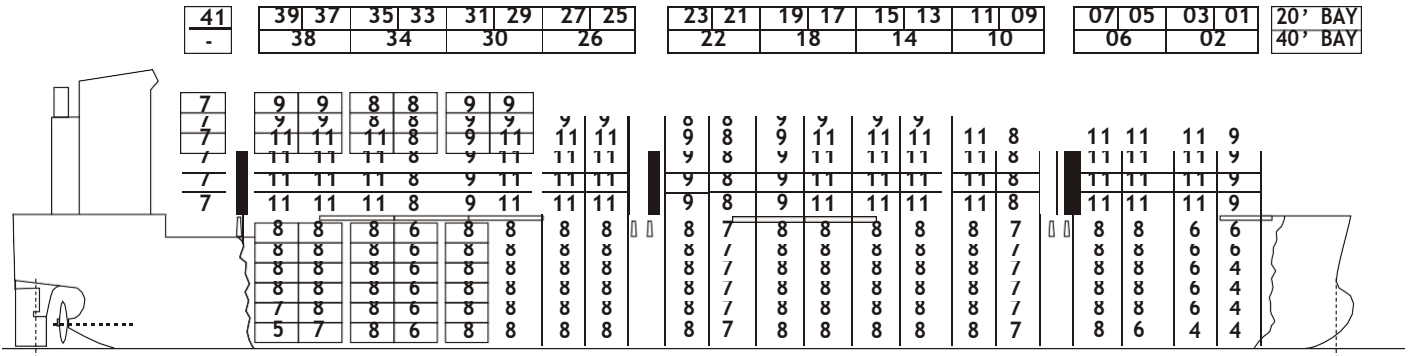
20 tons/day

TANK CAPACITY

	m ³	Capacity %	SG T/m ³	t
Fuel Oil + dual purpose tanks	1693,3	98	0,980	1626,24
Diesel Oil	530,4	98	0,850	441,82
Lubricating Oil	206,3	98	0,900	181,95
Fresh Water	253,5	100	1,000	253,50
Ballast Water + dual purpose tanks	13357,1	100	1,025	13691,02
Miscellaneous Tanks	345,0	100	1,000	345,00



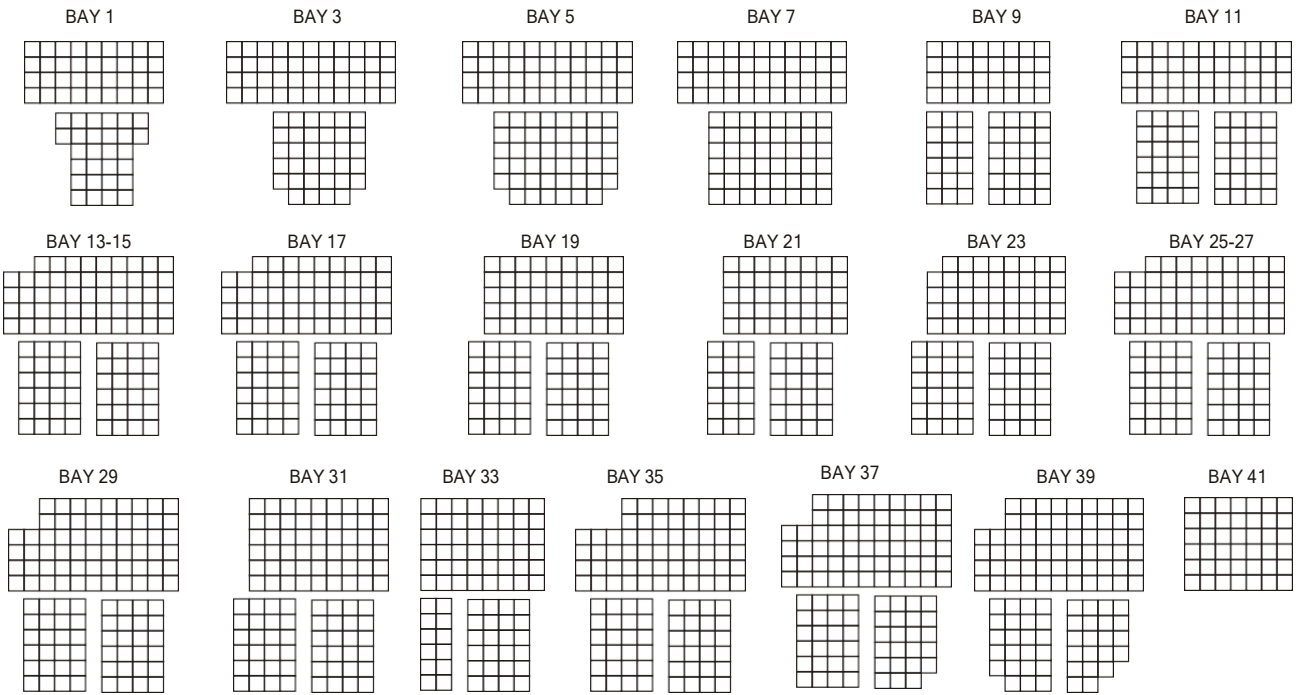
CONTAINER CAPACITY



DECK	42	62	62	60	48	54	62	53	53	44	40	45	53	53	53	44	32	44	44	44	36	TEU(FEU)	1028 (-)
	(42)	62		48(12)		54(8)		53		40(4)		45(8)		53		32(12)		44		36(8)		FEU(TEU)	467 (94)

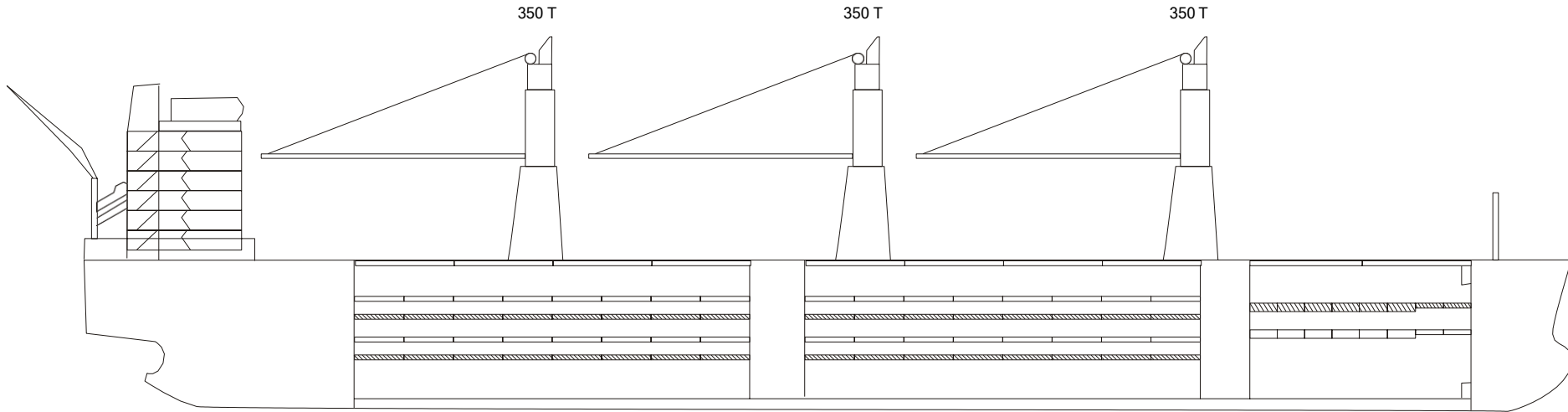
HOLDS	44	47	48	36	48	48	48	48	48	48	42	48	66	48	48	48	42	48	46	34	28	TEU(FEU)	895
	44(3)		36(12)		48		48		48		42(6)	48		48		42(6)		46(2)		28(6)		FEU(TEU)	430(35)

CONTAINER CAPACITY TOTAL		TEU(FEU)	1923 (-)
		FEU(TEU)	897 (129)



MAX. PERMISSIBLE LOADING

	Uniform Distrib. T /m ²		T /per Stack of	
	Hatch covers	Deck	TEU	FEU
Weather deck hatch covers	3		70	90
Tweendeck hatch covers	4		-	-
Double Bottom Tank Top	18		144	180



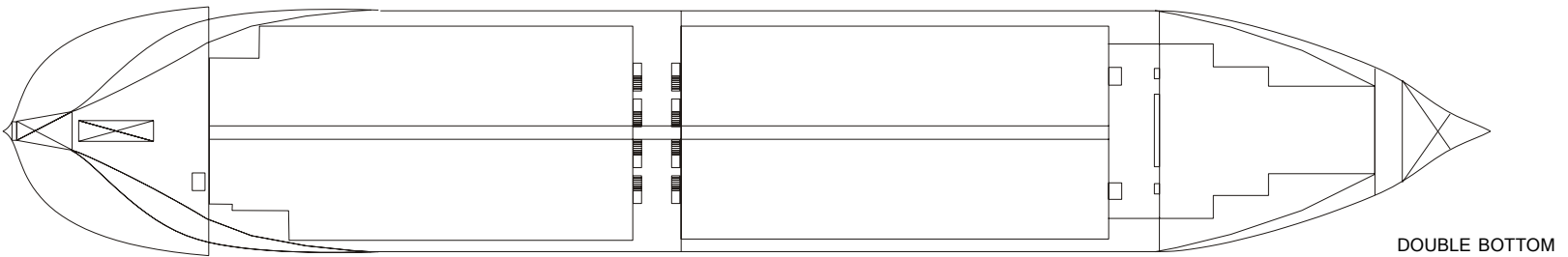
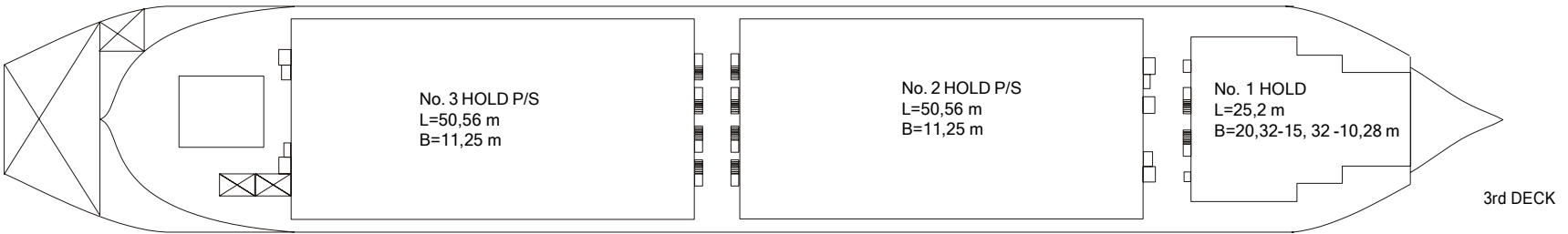
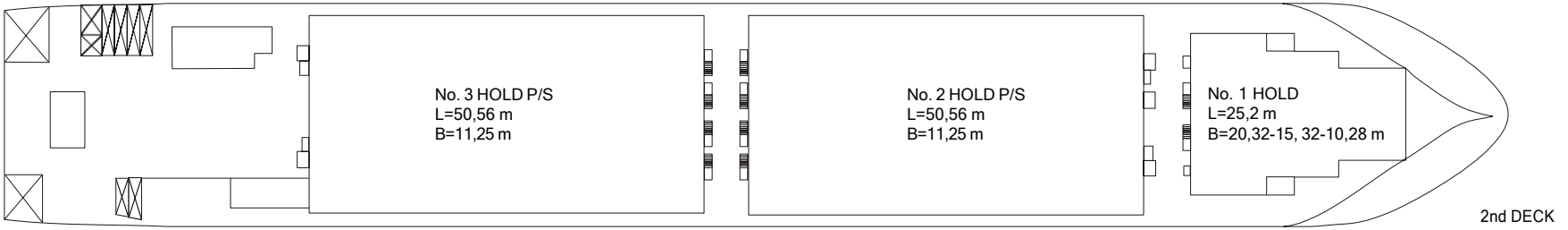
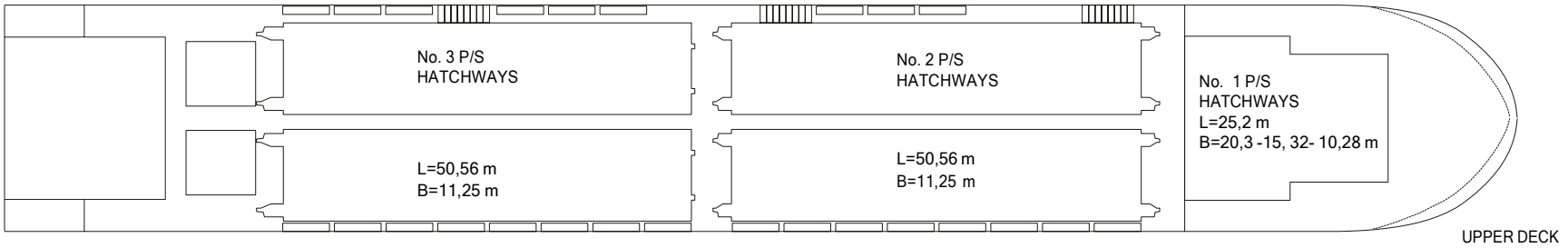
<u>PRINCIPAL DIMENSIONS</u>	LENGTH overall	m	189,90	DEPTH moulded	m	15,50	HEIGHT maximal	m	52,46
	- btw perpendic.		184,00						
	BREADTH moulded		28,00						

HATCH No	1	2	3
----------	---	---	---

DIMENSIONS (m)	L	B	H	L	B	H	L	B	H
Upper Tweendeck A	25,2	20,32-15, 32-10,28	8,71 - 5,37	2 x 50,56	2 x 11,25	6,16	2 x 50,56	2 x 11,25	6,16
Lower Tweendeck B	-	-	-	2 x 50,56	2 x 11,25	4,64	2 x 50,56	2 x 11,25	4,64
Lower Hold	25,2	20,32-15, 32-10,28	9,58 - 6,24	2 x 50,56	2 x 11,25	3,92	2 x 50,56	2 x 11,25	3,92

*

BALE CAPACITY	m ³	cub.ft	m ³	cub.ft	m ³	cub.ft	m ³	cub.ft
Upper Tweendeck	3 810	133 350	2 x 3 505	2 x 122 675	2 x 3 505	2 x 122 675	17 830	624 050
Lower Tweendeck	/	/	2 x 2 640	2 x 92 400	2 x 2 640	2 x 92 400	10 560	369 600
Lower Hold	2 338	81 830	2 x 2 230	2 x 78 000	2 x 2 168	2 x 75 880	11 134	389 590
Total	6 148	215 180	16 750	586 150	16 626	581 910	39 524	1 383 240



**CONTENTS**

INFORMATION	PAGE
NAME OF VESSEL	1
FLAG	1
MASTER / CREW	1
PORT OF REGISTRY	1
CALL SIGN / INMARSAT C	1
BUILDERS (SHIPYARD) / SINCE OPERATED BY CHIPOLBROK	1
TONNAGE INTERNATIONAL / SUEZ CANAL / PANAMA CANAL	1
CLASSIFICATION SOCIETY / CLASS	1
IMO No / TYPE OF VESSEL	1
MAIN ENGINE	2
SPEED / FUEL CONSUMPTION	2
AUXILIARY ENGINES / BOILERS	2
VENTILATION	2
FRESH WATER EVAPORATOR	2
TANKS CAPACITIES	2
LOADING SCALE	3
- Deadweight /Draft / Immersion	3
- Loading Marks / Constants stores / Light Ship Weight	3
CONTAINER BAY PLAN - GENERAL / MAX. LOADING CAPACITY	4
DECKS / HATH COVERS	4
MAIN DETALS: LOA / BOA / DEPYH / HEIGHT / CRANES CAPACITY	5
CARGO COMPARTMENTS:	5
-DIAMENSIONS	5
-BALE CAPACITY	5
DECK HORIZONTAL SECTIONS	6
CONTENTS	7

NOTES



Gdynia, October 2017

Published by: CHIPOLBROK Chinese - Polish Joint Stock Shipping Co. Branch Office, Gdynia

Edition: 100 copies

Printed by: KRET

Utmost care and dilligence were used at compilation and verification of data contained herein which are believed to be accurate and correct, but neither Editors, nor Publishers, nor Printers assume any responsibility for eventual consequences of errors or misprints, if any.