



FLAG	<b>LIBERIA</b>	PORT OF REGISTRY	<b>MONROVIA</b>
		TELEX-INMASART "C"	<b>420935510</b>
MASTER/CREW	<b>POLISH</b>	IMO No	<b>9432153</b>
		OPERATED SINCE	<b>25 Oct. 2011</b>
CALL SIGN	<b>5LFJ7</b>		
BUILT	<b>DALIAN SHIPYARD</b>		
TONNAGE		GROSS	NET
	International	<b>24104</b>	<b>10824</b>
	Suez Canal	<b>24329</b>	<b>23187</b>
	Panama Canal	<b>20126</b>	<b>21191</b>
CLASS	<b>PRS:*KM L4 LAL ACC(1108) CG IWS AUT NAV1</b>		
TYPE	Multipurpose cargo vessel. Strengthened for carriage of heavy cargoes and adapted for carriage of containers.		



<u>MAIN ENGINE</u>							<u>SPEED</u>	<u>FUEL CON-SUMPTION</u>
Type	kW ~ BHP		at rpm		Fuel		knots	t/day
<b>SULZER 7RT - FLEX60C</b>	<b>16520 - 22153</b>		<b>114</b>		<b>IFO 380</b>		<b>13,4</b>	<b>23,4</b>
							<b>13,8</b>	<b>25,2</b>
							<b>14,5</b>	<b>29,1</b>
							<b>15,1</b>	<b>33,3</b>
							<b>15,8</b>	<b>38,0</b>
							<b>16,5</b>	<b>43,0</b>
							<b>16,8</b>	<b>45,7</b>
							<b>17,1</b>	<b>48,5</b>
							<b>17,8</b>	<b>54,5</b>
							<b>18,5</b>	<b>60,9</b>
<u>AUXILIARY ENGINES Diesel Generator sets</u>								
Type	kW	rpm	kVA	AC V	Hz	Fuel		
<b>3 x WARTSILA AUXPAC 975W6L20</b>	<b>1025</b>	<b>900</b>				<b>IFO 380</b>		
<b>GENERATOR FENXI-SIEMENS LICENCE</b>								
<b>TYPE 1FC 6 - 3 phase</b>				<b>1219</b>	<b>450</b>	<b>60</b>		
<b>1 x EMERGENCY: NTA 855-G1</b>	<b>287</b>	<b>1800</b>	<b>212</b>	<b>450</b>	<b>60</b>			
<u>BOILERS</u>								
Type	kg/h		bar		Fuel		Aux.Eng	<b>2,8</b>
<b>Oil-fired BOILER SAACKE KLN/VM -1,5/7</b>	<b>1500</b>		<b>7</b>		<b>IFO 380</b>		<u>PORT</u>	<b>4,3</b>
<b>EXHAUST-GAS BOILER SAACKE KIP/DH 1,6/7</b>	<b>1600</b>		<b>7</b>				Aux.Eng Boiler	

VENTILATION of cargo compartments

**Natural supply, mechanical exhaust: 6 air changes per hour.**

FRESH WATER EVAPORATOR

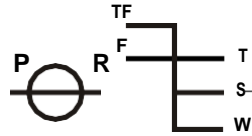
**24 m<sup>3</sup> / 24 h**

TANK CAPACITY

	m <sup>3</sup>	Capacity %	SG T/m <sup>3</sup>	t
Fuel Oil + dual purpose tanks	<b>3830,06</b>	<b>98</b>	<b>0,960</b>	<b>3603,32</b>
Diesel Oil	<b>156,85</b>	<b>98</b>	<b>0,860</b>	<b>127,99</b>
Lubricating Oil	<b>162,57</b>	<b>98</b>	<b>0,900</b>	<b>140,46</b>
Fresh Water	<b>276,65</b>	<b>100</b>	<b>1,000</b>	<b>276,65</b>
Ballast Water + dual purpose tanks	<b>11183,17</b>	<b>100</b>	<b>1,025</b>	<b>11462,75</b>
Miscellaneous Tanks	<b>170,55</b>	<b>98</b>	<b>1,025</b>	<b>174,81</b>



**FREEBOARD MARK & DEADWEIGHT SCALE**



Deadweight Scale						
Draft (m)	Freeboard from Deck Line (m)	M.T.C (t-m)	T.P.C (t)	Displacement (t)	Deadweight (t)	Draft (m)
		720				
		710		47000	34000	
11,5	4,0	700		46000	33000	11,5
		690	49,0	45000	32000	
		680		44000	31000	
11,0	4,5	670		43000	30000	11,0
		660		42000	29000	
		650	48,0	41000	28000	
10,5	5,0	640		40000	27000	10,5
		630		39000	26000	
		620		38000	25000	
10,0	5,5	610	47,0	37000	24000	10,0
		600		36000	23000	
		590		35000	22000	
		580		34000	21000	
		570	46,0	33000	20000	
9,5	6,0	560		32000	19000	9,5
		550		31000	18000	
		540		30000	17000	
		530	45,0	29000	16000	
9,0	6,5	520		28000	15000	9,0
		510		27000	14000	
		500		26000	13000	
8,5	7,0	490	44,0	25000	12000	8,5
		480		24000	11000	
		470		23000	10000	
8,0	7,5	460	43,0	22000	9000	8,0
		450		21000	8000	
7,5	8,0	440		20000	7000	7,5
		430	42,0	19000	6000	
		420		18000	5000	
		410		17000	4000	
7,0	8,5	400	41,0	16000	3000	7,0
		390		15000	2000	
		380		14000	1000	
6,5	9,0	370	40,0	13000	0	6,5
		360		12000		
		350		11000		
6,0	9,5					6,0
5,5	10,0					5,5
5,0	10,5					5,0
4,5	11,0					4,5
4,0	11,5					4,0
3,5	12,0					3,5

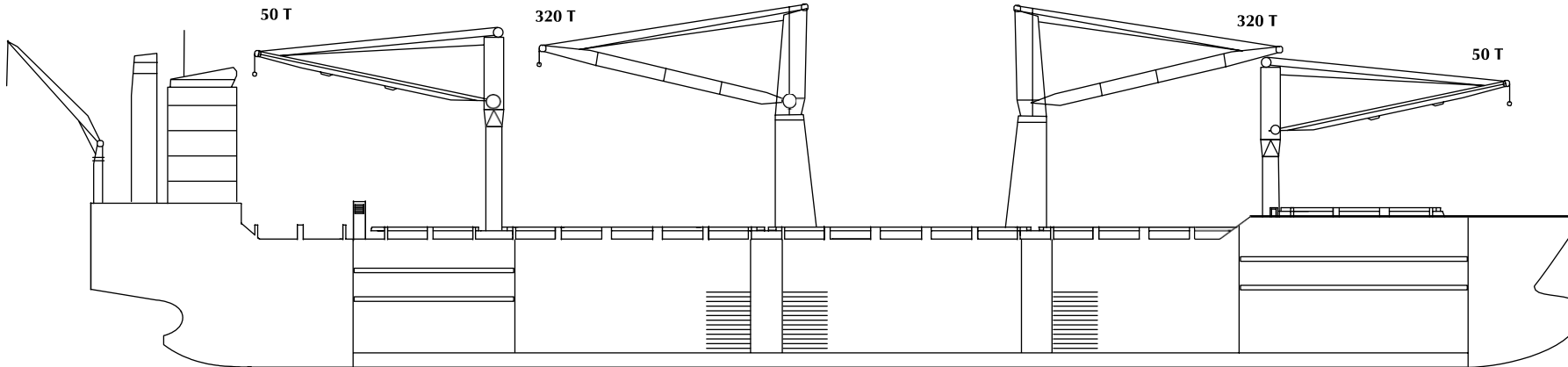
DEADWEIGHT (T)      DRAFT (m)

SUMMER S.W. (S)      **30300**      **11,00**

Constant stores:      350

Light ship 13243 t





**PRINCIPAL DIMENSIONS**

LENGTH overall	m	199,8	DEPTH moulded	m	15,5	HEIGHT maximal	m	51,5
- btw perpendic.		189,0						
BREADTH moulded		27,8						

HATCH No	1	2	3	4	5
----------	---	---	---	---	---

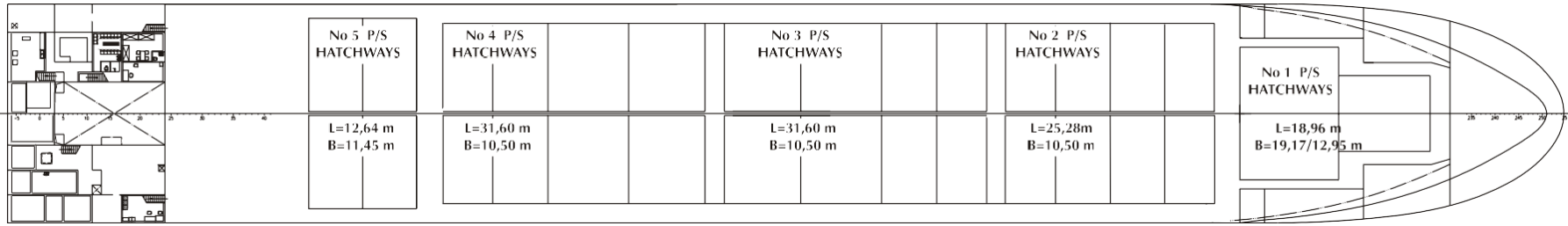
DIMENSIONS (m)	L	B	H	L	B	H	L	B	H	L	B	H	L	B	H
Upper Tweendeck A*	26,8	12,9-19,1	5,8**	25,2	10,5	3,5-6,1	31,6	10,5	3,5-6,1	31,6	10,5	3,5-6,1	19,7	11,45	5,8**
Lower Tweendeck B*	27,5	8,9-16,1	3,1	25,2	10,5	2,0-4,6	31,6	10,5	2,0-4,6	31,6	10,5	2,0-4,6	19,7	11,45	3,5
Lower Hold	31,3	5,1-13,4	5,4	25,2	10,5	3,9-6,5	31,6	10,5	3,9-6,5	31,6	10,5	3,9-6,5	19,7	4,2-7,8	5,2

\*) Breadths in holds 2 - 5 divided by longitudinal bulkhead into two (P&S) compartments.

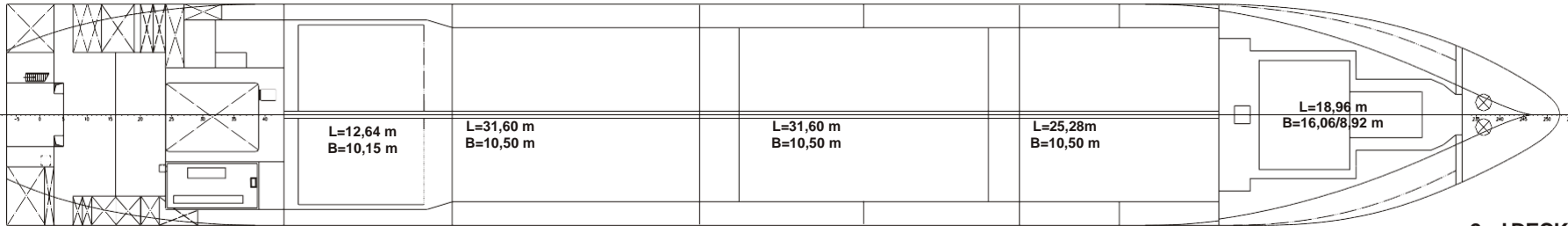
\*\*\*) Maxheights in Upper Tweendecks within Hatchcoamings.

BALE CAPACITY	m <sup>3</sup>	cub.ft	m <sup>3</sup>	cub.ft	m <sup>3</sup>	cub.ft	m <sup>3</sup>	cub.ft	m <sup>3</sup>	cub.ft	m <sup>3</sup>	cub.ft	m <sup>3</sup>	cub.ft
Upper Tweendeck A	2 638	93 160	2x1632	115 266	2x2 040	144 084	2x2 040	144 084	1 174(P)+1 181(S)	83 166	16 417	579 760		
Lower Tweendeck B	1 147	40 506	2x1229	86 804	2x1 536	108 486	2x1 536	108 486	832(P)+838(S)	58 976	11 419	403 258		
Lower Hold	1 595	56 327	2x888	62 718	2x1 298	91 676	2x1 253	88 498	803(P)+805(S)	56 786	10 081	356 005		
<b>Total</b>	<b>5 380</b>	<b>189 993</b>	<b>7 498</b>	<b>264 788</b>	<b>9 748</b>	<b>344 246</b>	<b>9 658</b>	<b>341 068</b>	<b>5 633</b>	<b>198 928</b>	<b>37 917</b>	<b>1 339 023</b>		

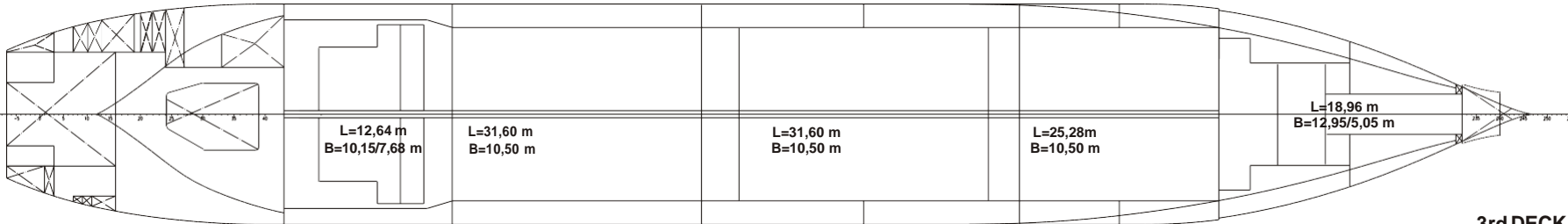




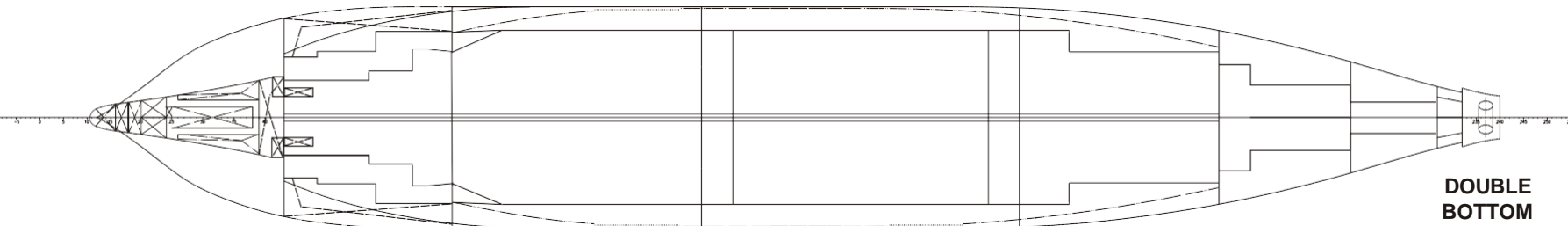
UPPER DECK



2nd DECK



3rd DECK



DOUBLE  
BOTTOM  
TANKS & HOLDS

**CONTENTS**

<b>INFORMATION</b>	<b>PAGE</b>
<b>NAME OF VESSEL</b>	<b>1</b>
<b>FLAG</b>	<b>1</b>
<b>MASTER / CREW</b>	<b>1</b>
<b>PORT OF REGISTRY</b>	<b>1</b>
<b>CALL SIGN / INMARSAT C</b>	<b>1</b>
<b>BUILDERS (SHIPYARD) / SINCE OPERATED BY CHIPOLBROK</b>	<b>1</b>
<b>TONNAGE: INTERNATIONAL / SUEZ CANAL / PANAMA CANAL</b>	<b>1</b>
<b>CLASSIFICATION SOCIETY / CLASS</b>	<b>1</b>
<b>IMO No / TYPE OF VESSEL</b>	<b>1</b>
<b>MAIN ENGINE</b>	<b>2</b>
<b>SPEED / FUEL CONSUMPTION</b>	<b>2</b>
<b>AUXILIARY ENGINES / BOILERS</b>	<b>2</b>
<b>VENTILATION</b>	<b>2</b>
<b>FRESH WATER EVAPORATOR</b>	<b>2</b>
<b>TANK CAPACITIES</b>	<b>2</b>
<b>LOADING SCALE</b>	<b>3</b>
- Deadweight / Draft / Immersion	<b>3</b>
- Loading Marks / Constant stores / Light Ship Weight	<b>3</b>
<b>CONTAINER BAY PLAN - GENERAL / MAX. LOADING CAPACITY</b>	<b>4</b>
<b>DECKS / HATCH COVERS</b>	<b>4</b>
<b>MAIN DETAILS: LOA / BOA / DEPTH / HEIGHT / CRANES CAPACITY</b>	<b>5</b>
<b>CARGO COMPARTMENTS:</b>	<b>5</b>
- DIMENSIONS	<b>5</b>
- BALE CAPACITY	<b>5</b>
<b>DECK HORIZONTAL SECTIONS</b>	<b>6</b>
<b>CONTENTS</b>	<b>7</b>

NOTES



---

Gdynia, September 2012.

Edition: 100 copies

Published by: CHIPOLBROK Chinese - Polish Joint Stock Shipping Co. Branch Office, Gdynia

Printed by: KRET

Utmost care and diligence were used at compilation and verification of data contained herein which are believed to be accurate and correct, but neither Editors, nor Publishers, nor Printers assume any responsibility for eventual consequences of errors or misprints, if any.