



# M/V YONG XING



CHINESE-POLISH JOINT STOCK  
SHIPPING COMPANY

# M/V YONG XING

## Ship Information

Ship's Name	YONG XING
IMO No	9930911
Call Sign	VRUP6
Nationality	HONG KONG
Port of Registry	HONG KONG
Official Number	HK-5633
Builder	Chengxi Shipyard Co., Ltd.

## MAIN PARTICULARS

Length overall	199.90 m
Length between perp.	196.50 m
Breadth moulded	32.26 m
Depth moulded	19.30 m
Design draught	11.30 m
Scantling draught	13.50 m
Deadweight at design draught	48122.2 t
Deadweight at scantling draught	61641.7 t
Endurance	18,000 nm
Complement	26

## Tonnage Measurement

International	
Gross Tonnage	39,433
Net Tonnage	19,469
Panama Canal	
Net Tonnage	
SUEZ Canal	
Gross Tonnage	

## CLASSIFICATION

### DNVGL

+1A, General dry cargo ship; HC(A), Holds 2,4 may be empty; Strengthened (IB), Grab(3-20); COAT-PSPC(B); CONTAINER, SAFELASH, LCS; DG(B,P), DBC, BIS, BWM(T), Recyclable, E0, TMON(Oil lubricated), ER(SCR, TIII)

### CCS

★CSA General Dry Cargo Ship; Holds Nos. 2,4 may be Empty; Strengthened For Heavy Cargoes; Equipped with Container Securing Arrangements; Grab\*(20); PSPC(B); SOLAS II-2 Reg.19; Loading Computer(S,I,G); In-Water Survey  
★CSM AUT-0; SCM; BWMS; BWMP; GPR(EU); NEC(SCRS)

## CARGO CAPACITY AND EQUIPMENT

Cargo holds (Bulk)	
No.1 Cargo Hold	9,409 m <sup>3</sup>
No.2 Cargo Hold	15,818 m <sup>3</sup>
No.3 Cargo Hold	21,146 m <sup>3</sup>
No.4 Cargo Hold	15,818 m <sup>3</sup>
No.5 Cargo Hold	12,669 m <sup>3</sup>
Hatch covers	Folding type
Uniform load	3.5 t/m <sup>2</sup>
Containers	
On weather deck	804 TEU
Opening of Cargo Hatch	
No.1 Hatchway	17.22m x 24.50/19.40m
No.2 Hatchway	26.24m x 27.46m
No.3 Hatchway	36.08m x 27.46m
No.4 Hatchway	26.24m x 27.46m
No.5 Hatchway	21.32m x 27.46m
Tween decks (in all cargo holds)	Pontoon type
	Non-sequence (except No.1 CH)
Uniform load	3.0 t/m <sup>2</sup>
Cargo cranes	4 sets
No.1 & 4 Crane	45t X 38m / 80t X 24m
No.2 & 3 Crane	60t X 38m / 150t X 18m
Max. combine lift	300t

## MACHINERY MAIN COMPONENTS

Main engine	MAN B&W 6G50ME-C9.6 HPSCR
SMCR	8000 Kw x 83.0 r/min
CSR	6400 Kw x 77.1 r/min
Diesel generators	3 x 750 kW

## PROPELLER

Material	Ni-Al-Bronze Cu3
Type	Fixed pitch propeller
Diameter	6900 mm
Number of blades	4
Mean pitch	5923 mm

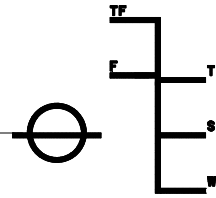
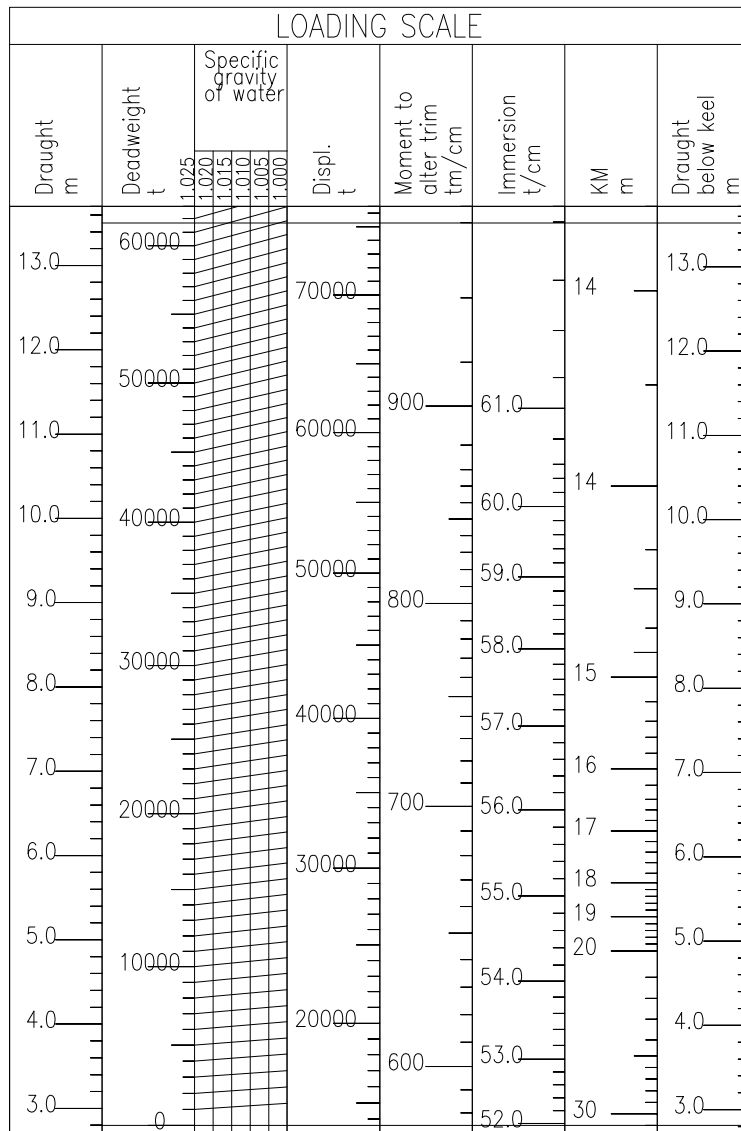
## ENERGY EFFICIENCY PARTICULARS

Service speed	14.5 kn
(At design draught, CSR, with 15% SM)	
ME fuel oil consumption at CSR	24.65 t/d
EEDI	phase 3 compliant

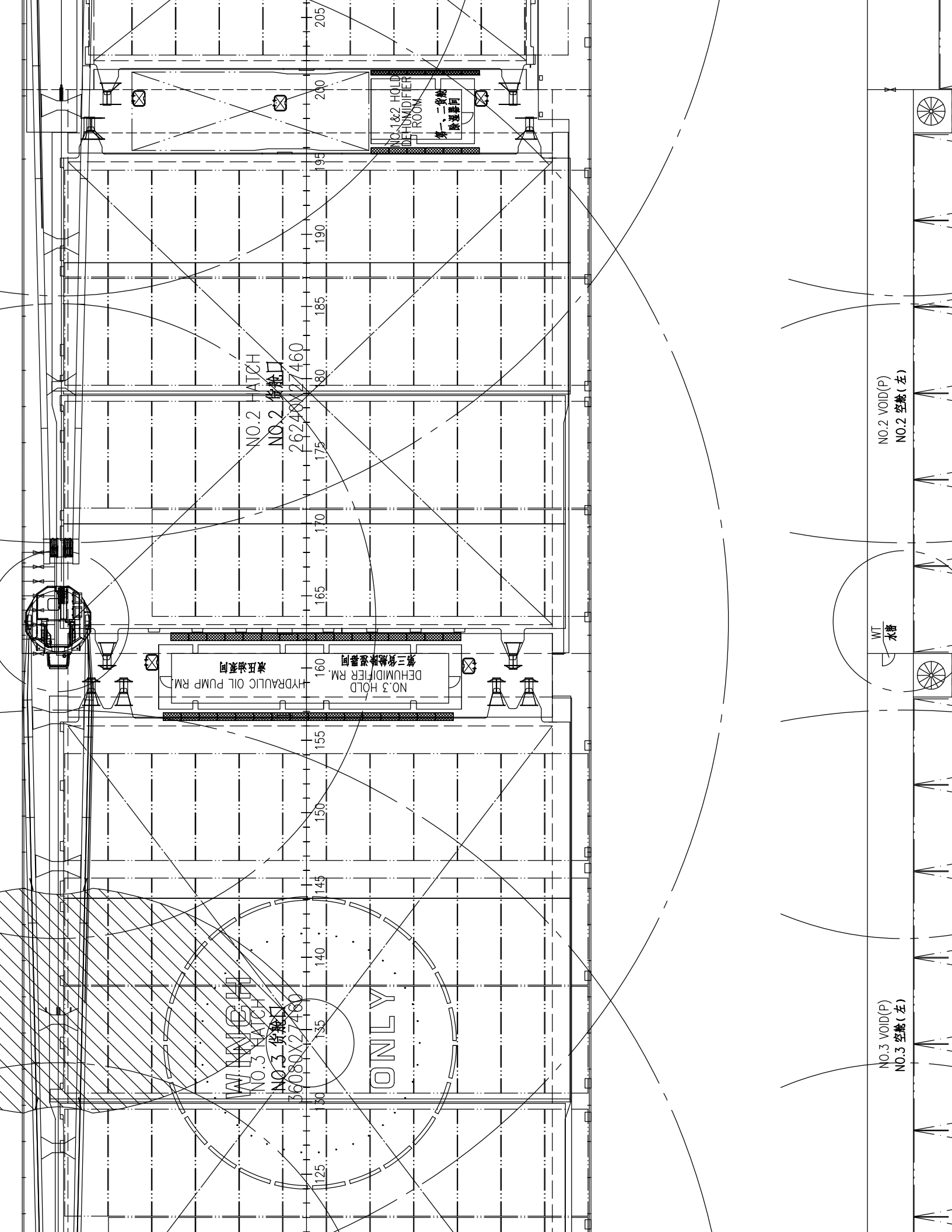
# M/V YONG XING

AIR DRAFT (m)			
Description	Height above BL	Da = 8.0 m Df = 6.5m	Da = 13.5m Df = 13.5m
Radar Mast (FR15)	49.86	41.96	36.36
Top of Crane No.2 (FR165)	48.29	41.29	34.79

FREEBOARD MARK AND DEADWEIGHT SCALE					
Mark	Description	Freeboard mm	Draught Moulded m	Displacement t	Deadweight t
S	Summer	5840	13.500	75241.6	61641.7
F	Summer Fresh Water	5536	13.804	75240.5	61640.6
T	Tropic	5559	13.781	76979.2	63379.3
TF	Tropic Fresh Water	5255	14.085	76938.0	63338.1
W	Winter	6121	13.219	73506.2	59906.3



LW 13599.9t  
LCG 87.981m



NO. 1 & 2 HOLD  
DEHUMIDIFIER  
ROOM  
第一、二貨艙  
除濕器間

NO. 2 HATCH  
NO. 2 貨艙口  
26240027460

NO. 3 HOLD  
DEHUMIDIFIER RM.  
第三貨艙除濕器間  
HYDRAULIC OIL PUMP RM.  
液壓油泵間

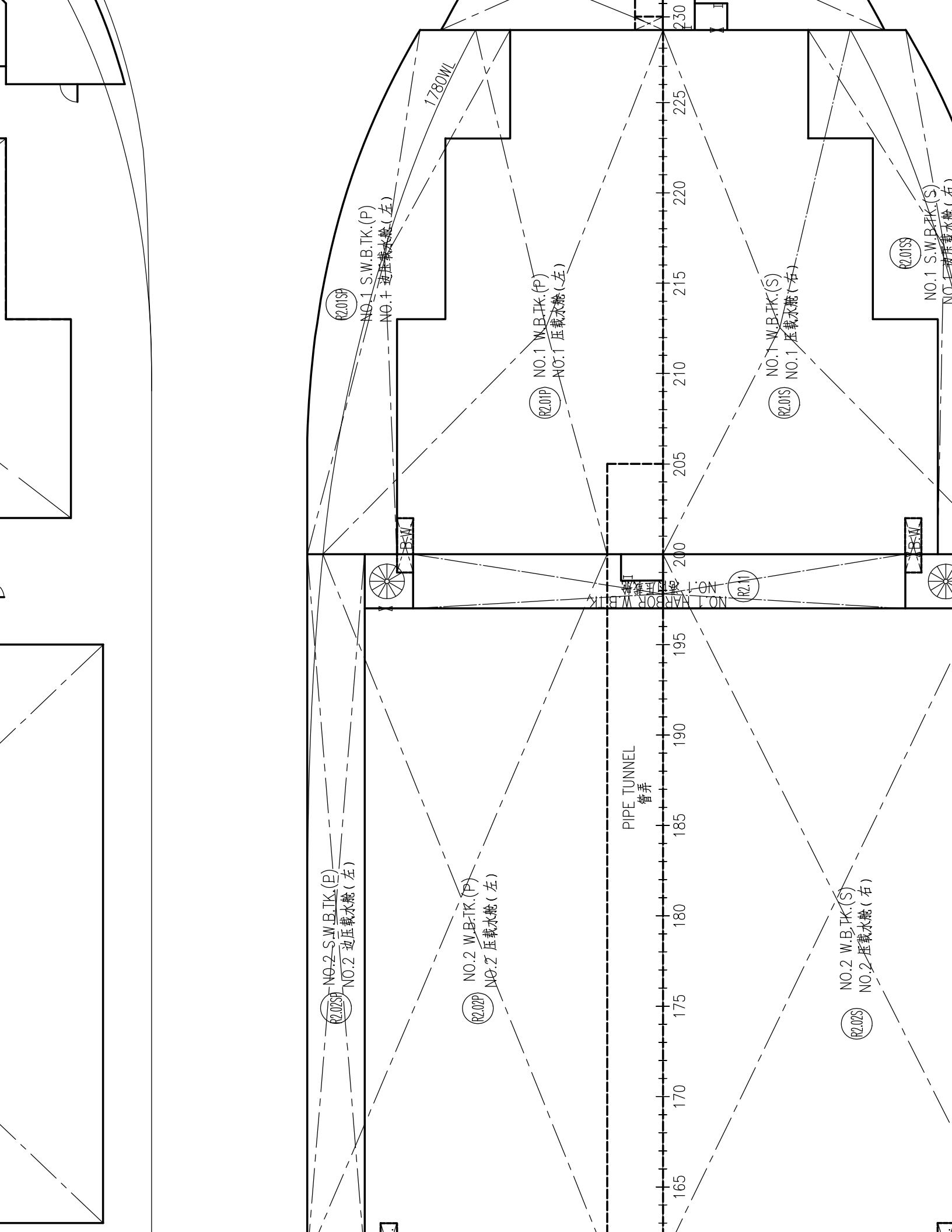
NO. 3 HATCH  
NO. 3 貨艙口  
36080027480

ONLY

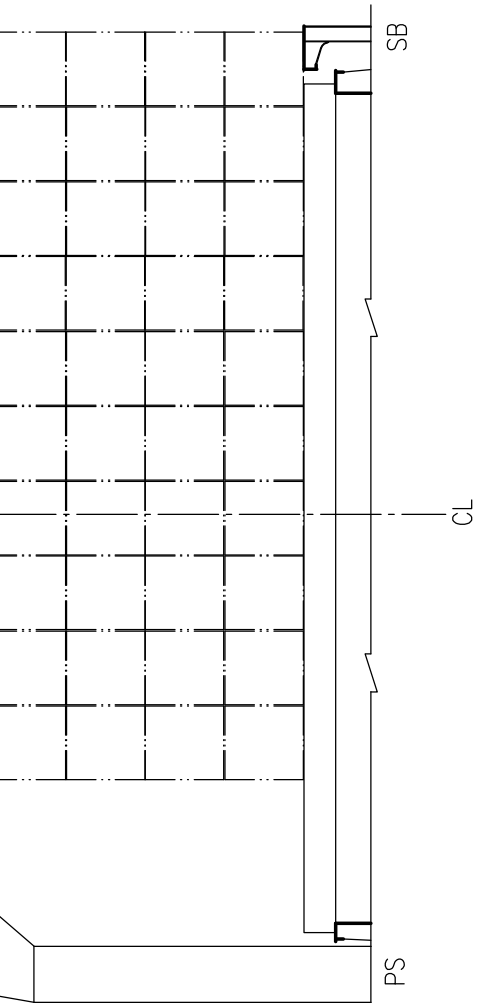
NO. 2 VOID (P)  
NO. 2 空艙 (左)

WT  
水箱

NO. 3 VOID (P)  
NO. 3 空艙 (左)



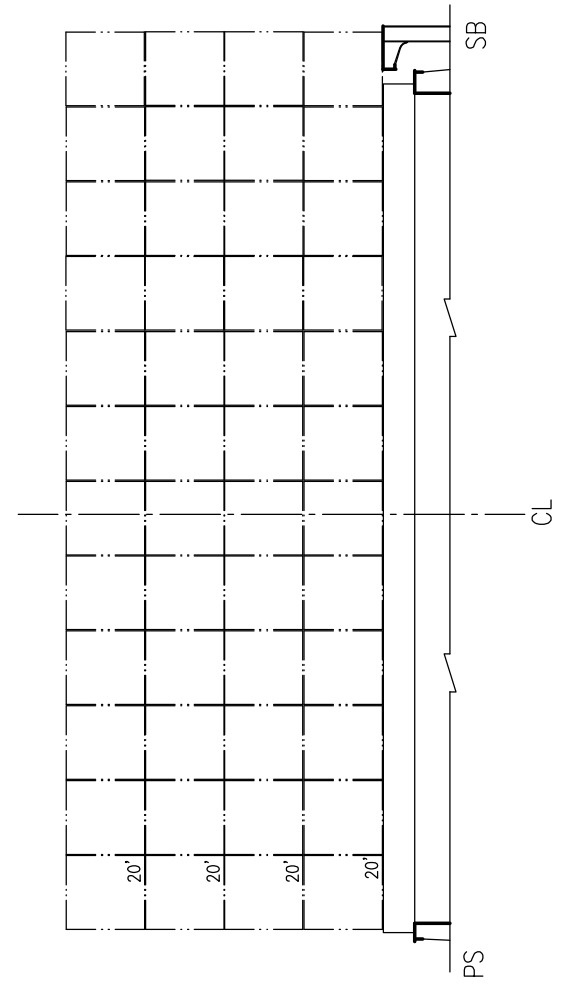
88
86
84
82



ROW NO.	列编号	06	04	02	00	01	03	05	07	09	11	ON DECK 甲板
---------	-----	----	----	----	----	----	----	----	----	----	----	------------

BAY 19

TIER NO.
层编号
88
86
84
82



ROW NO.	列编号	10	08	06	04	02	00	01	03	05	07	09	11	ON DECK 甲板
---------	-----	----	----	----	----	----	----	----	----	----	----	----	----	------------